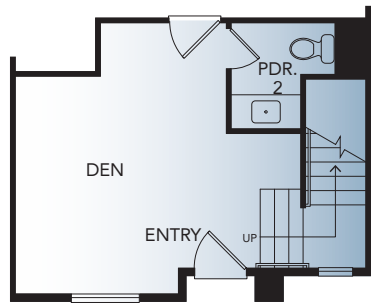


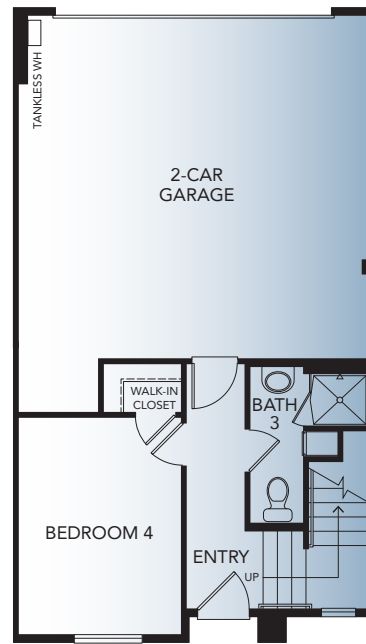
ASPIRE

PLAN 4 PRELIMINARY

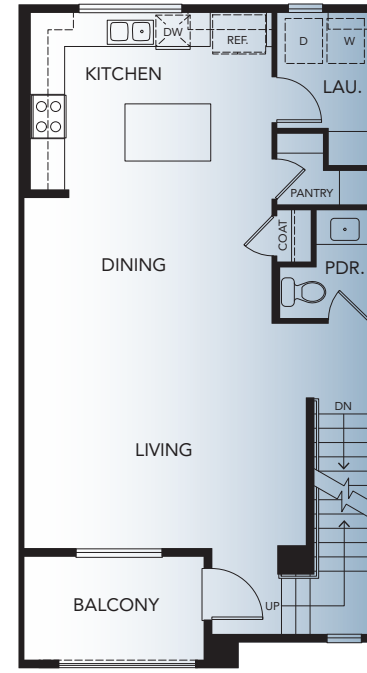
4 Bedrooms, 3.5 Baths
Approx. 1,788-1,800 Sq. Ft.



*WINDOW AT 4B END UNITS



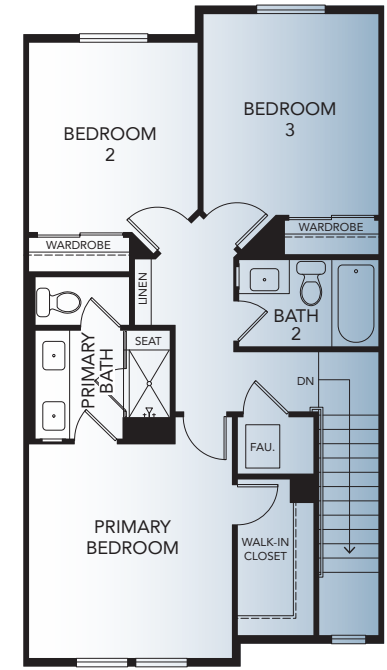
*WINDOWS AT 4B END UNITS



SECOND FLOOR

*4B SECOND FLOOR

*WINDOWS AT 4B END UNITS



THIRD FLOOR

*4B THIRD FLOOR



Made in Southern California

Thank you for reading the fine print. Floor plans shown are subject to further enhancements and modifications upon finalizing. In an effort to continuously improve our homes and our presentation, Melia Homes reserves the right, without prior notice or obligation, to change or alter dates, maps, floor plans, exterior design, features and specifications including options, materials, plotting, pricing and procedures. Floor plans and renderings are artists' conceptions are not intended to be an exact replica of homes or landscaping. All square footages and dimensions (listed) are approximate. Not all vehicles will fit in all garage spaces. Windows and porches vary by elevation. Options/upgrades are additional costs, and construction timing may dictate that some options/upgrades either may not be available or may be pre-plotted in select homes. If in doubt about anything, please ask Community Sales Manager for clarification prior to purchase. DRE #01881347.

